



Owners Manual
300 Watt Guitar Head

Dear Randall Owner,

Congratulations on the purchase of your new Randall Amplifier, and thank you for the support of our product line. Randall amps are made to strict quality and consistent performance standards, that will provide you with years of musical satisfaction. Please read the following manual, before operating your new Warhead X2 guitar amplifier. The revolutionary X2 will take hi-gain amplification to new heights, and your journey begins today. If you ever have any questions or comments, please contact us anytime. Enjoy your new purchase!

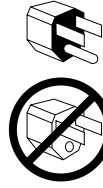
Warnings:

- Do not block any ventilation openings on the sides or rear of the preamp. Always give four inches of proper ventilation to the rear of the preamp.
- Do not expose the amplifier to rain, moisture, dripping or splashing water. Do not place objects filled with liquids on or nearby the amplifier.
- Do not expose the amplifier to direct sunlight or extremely high temperatures. Always unplug the AC power cord before changing fuses or tubes. When replacing fuses, use only the same type and rating.
- Be sure to connect to an AC power supply that meets the power supply that meets the power supply specification, listed on the rear fuse holder.
- If there is any danger of lightning occurring nearby, remove the power plug from the wall socket in advance.
- Do not use excessive force in handling control buttons, switches and controls. Do not use solvents to clean the unit, wipe off the exterior with soft cloth.



EXCLAMATION POINT: The exclamation point within an equilateral triangle, is intended to alert the user of the presence of **IMPORTANT OPERATING AND MAINTENANCE OR SERVICE INSTRUCTIONS** in the literature accompanying the product.

WARNING GRAPHIC ON PRODUCT:



GROUNDING: To prevent electric shock, **DO NOT DEFEAT THE 3 PRONG GROUNDING PLUG** on product's power cord. Do not use an adapter, extension cord or outlet unless the blades can be fully inserted to prevent blade exposure.

WARNING GRAPHIC ON PRODUCT:

CAUTION: TO PREVENT FIRE OR ELECTRICAL SHOCK, DO NOT EXPOSE TO RAIN OR MOISTURE

IMPORTANT SAFEGUARDS

THESE WARNINGS APPLY TO ALL RANDALL ELECTRONIC PRODUCTS. PLEASE READ AND OBSERVE ALL WARNINGS AND INSTRUCTIONS CONTAINED IN THIS SERVICE MANUAL AND THOSE ON YOUR RANDALL PRODUCT PRIOR TO ITS USE.

WARNINGS AND SYMBOLS:



LIGHTNING FLASH: The lightning flash with an arrowhead within an equilateral triangle, is intended to alert the user of the presence of uninsulated **DANGEROUS VOLTAGE** within the product's enclosure that may be of significant magnitude to constitute risk of electric shock to persons.



PRECAUTIONARY WARNING:

RAIN AND MOISTURE: To reduce the risk of fire or electric shock, **DO NOT EXPOSE THIS UNIT TO RAIN OR MOISTURE**. Operators of electronic products should in no way be in contact with water.

FRONT PANEL FEATURES AND CONTROLS

Channel switching:

The X2 incorporates 2 base channels with 3 modes of operation. Channel switching can be achieved by using either the front panel push button, or the included 4-button MIDI foot controller. When using the front panel button simply push and release the channel select button to scroll through the 3 modes. The amp defaults on the Clean channel, then press once for O.D., and press again for Fry mode. If the amp does not switch channels, it may require a reset by simply turning the amp off for 5 seconds, then back on.

When using the foot controller, first connect the cable to the MIDI IN on the rear panel then select the channel you want.

Master controls:

The front panel features two separate Master controls, one for each channel. These knobs control the level of volume for each channel.

Gain controls:

Each channel also features two separate Gain controls. On the clean channel, this knob will give you additional volume. The Overdrive channel Gain control is used to control the amount of distortion and saturation.

Warning: The Fry channel was designed with extreme high gain. Do not run this channel with the Gain knob on full. Recommended Gain setting is 6-7.

Density control:

This active EQ controls a specific preset low frequency, and allows you to dial in the amount of low end boost. This knob works great with speaker cabinets using a 15" driver.

Bass control:

A passive bass control that adjusts the amount of low end frequencies in your tone.

Mid-Level/Mid-Sweep controls:

This is a parametric mid-section, which allows precise tone adjustment to a particular mid-range frequency. The Mid-level knob controls the amount of cut or boosting to a specific frequency, and the Mid-sweep knob determines the frequency you will be cutting or boosting.

Treble control:

A passive tone control that adjusts the overall amount of upper mid-range to low treble frequencies for each channel.

Presence control:

REAR PANEL FEATURES

1. AC Power/Voltage Selector:

This amplifier can operate at AC currents of 100V, 110V, 120V, 230V. Simply remove the fuse with a small screwdriver, and line up the correct voltage with the arrow, and plug back in. After selecting the correct voltage, connect the AC power cord the wall socket.

2. MIDI IN/THRU:

Connect the included footswitch to the MIDI IN jack. The MIDI IN is the main input for the MIDI connection, and can be used with various multi-button MIDI foot controllers. The MIDI THRU passes the signal on to other MIDI capable units, such as external effects processors. Once the footswitch is connected to the MIDI IN, button 1 is used to select the CLEAN channel, button 2 selects the standard O.D. channel, and button 3 selects the FRY mode or gain boost function. Button 4 is used for turning the loop on/off, See effects loop below.

3. Assign able Effects loop:

Warning: ALL LOOP ASSIGN BUTTONS MUST BE IN THE OUT POSITION WHEN NOT USING THE EFFECTS LOOP. IF A BUTTON IS
This specialized series loop has several features which should be understood before using. First, each channel can be manually selected for use with the external effects that are connected to the Send/Return jacks. This allows you to assign the channels used with the loop. To activate any or all channels to work with the loop, simply press in the small buttons located in the effects sections. Leave the button in the *OUT* position for channels not used with the loop. Once you have selected the channels you want with the loop, you can select and change the channels using the included foot controller or front panel channel select button. When using button 4 (Loop on) on the footswitch, please note each effects loop button must be in the out (off) position, to manually turn the effects loop on/off using the footswitch.

The footswitch "Loop On" button will not activate or bypass the effects if the rear effects loop buttons are pressed in.

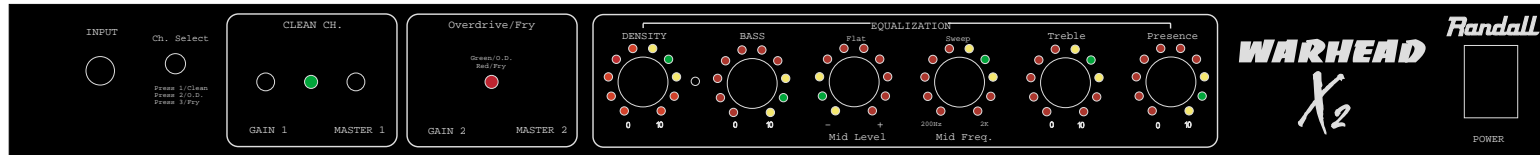
4. Slave Out w/Level control:

A basic preamp signal output, this output is used to connect directly to other power amps if more power is needed. The level control adjusts the amount of volume level output.

5. Speaker outputs:

Using a high quality speaker cable, connect either jack to the input on your speaker cabinet. Connect a single cable for mono operation, or connect both speaker outs to the left/right inputs on speaker cabinet for stereo operation.

PROGRAMMING THE X2 FOOTSWITCH

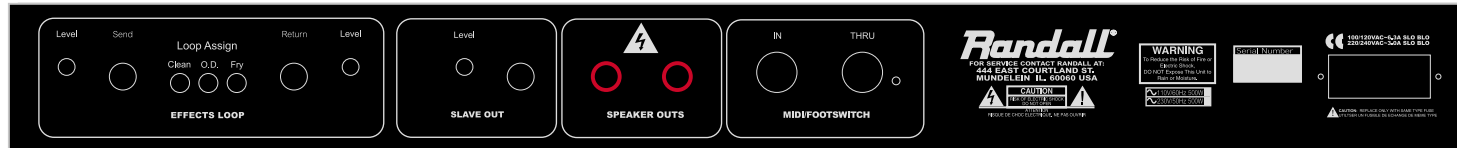


Press, hold, and release channel select button to store footswitch buttons and effects to each channel. (Clean, O.D., Fry)

When using the Included MIDI foot controller, it may require reprogramming to each channel, before it will work correctly. Please follow the list below to correctly program the X2 channels with the MIDI foot controller.

1. First connect the foot controller using the 7-Pin MIDI cable to the MIDI IN on your rear panel of the X2
 2. Push button 1 on the foot controller
 3. Set to Channel 1 (Clean) on the X2 (Now both the foot controller and the X2 should be on Channel 1.)
 4. Press, hold, and release the Channel button on the X2 front panel for 2 seconds.
 5. Next Push button 2 on the foot controller.
 6. Set to Channel 2 (O.D.) on the X2 (Now both the foot controller and the X2 should be on Channel 2.)
 7. Again, Press, hold, and release the Channel button on the X2 front panel for 2 seconds. Continue to repeat this process for channels 3 (Fry). Push button 3, select to Channel 3(Fry) on the X2, push the channel button for 2 seconds.
- If this process does not program the foot controller to the RM4, turn the unit off/on, and repeat the process. Please contact our customer service dept., if you should have any questions or problems.

ADDITIONAL REAR PANEL FEATURES



1. *Effects loop*: Rear panel feature included the assignable effects loop. When using the loop without the foot controller, you can choose each channel you want with effects by simply pressing the loop assign buttons. When any or all of the buttons have been pressed in those particular channel will not include the external effects that you have plugged into the effects loop. Please note that when using the footcontroller with an effect unit in the loop, all Loop assign buttons should be in the out position, than activate the effects using the ‘Loop On’ button of the foot switch. It is possible when using the effects loop with the foot controller to have any combination of on/off effects using the ‘loop Assign’ buttons.
2. *Slave out*: Not a direct recording, but a post preamp output which is generally connected to another power amp when running addition cabinets.
3. *Speaker Outs*: Using a high quality speaker cable, connect to the input of any 4, 8, or 16 ohm cabinet. Please note the power output is determined by the ohm load of the speaker cabinet. A 4 ohm cabinet will produce 300 watts of output, an 8 ohm cabinet 150 watts, and a16 ohm cab 80 watts.
4. *MIDI IN/Thru*: Using the included 7-pin MIDI cable, connect the included footcontroller to the MIDI IN jack. The MIDI thru is used to connect a 5-pin MIDI cable to the MIDI in on other external MIDI devices, such as effects units. See the following page for suggested hook ups.
5. *World Voltage Selector*: The fuse holder can be rotated to select any voltage in the world, allowing you to travel to other countries and still use your amplifier. Simply pull out an rotate the fuse holder, and line up the small arrow to the correct country voltage. Please note that you must change the fuse value when traveling to countries using 220-240V.

EXAMPLE HOOKUPS

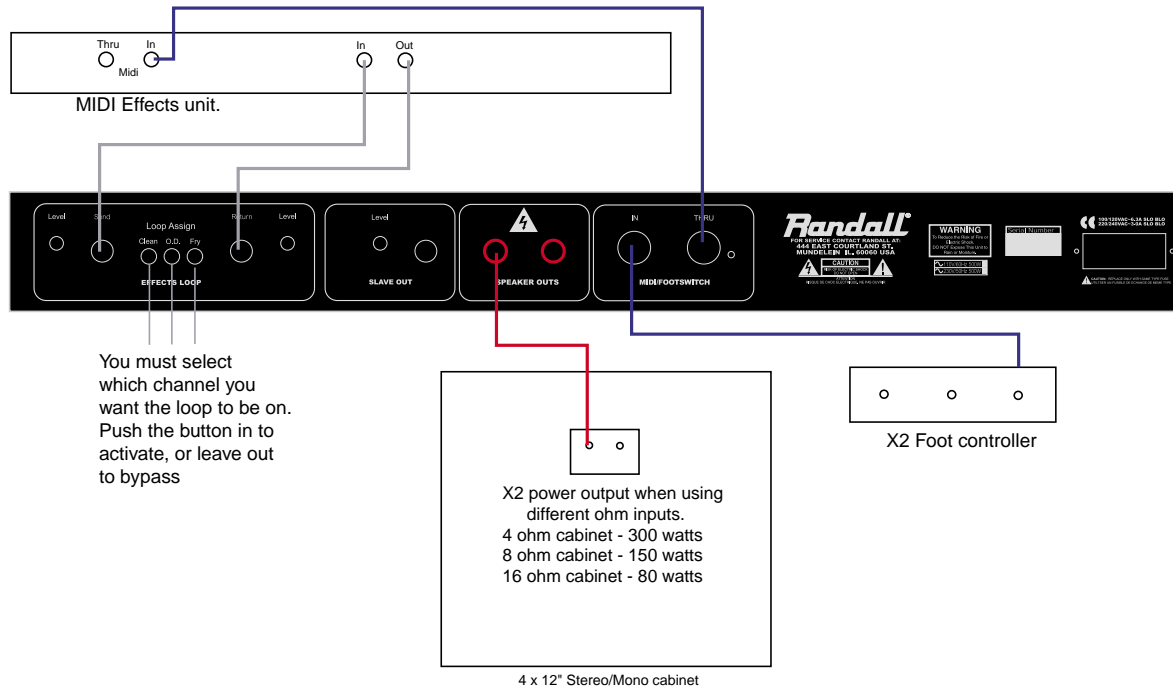
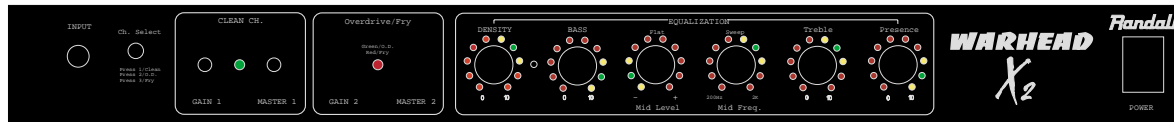


CHART YOUR SETTINGS.

The green and yellow LED's around each knob on the EQ section represent the "Dime Zone" Setting each knob to a yellow or green positions will achieve the tone that Dime delivers on stage or in the studio. Although good guitar playing technique is also needed.

